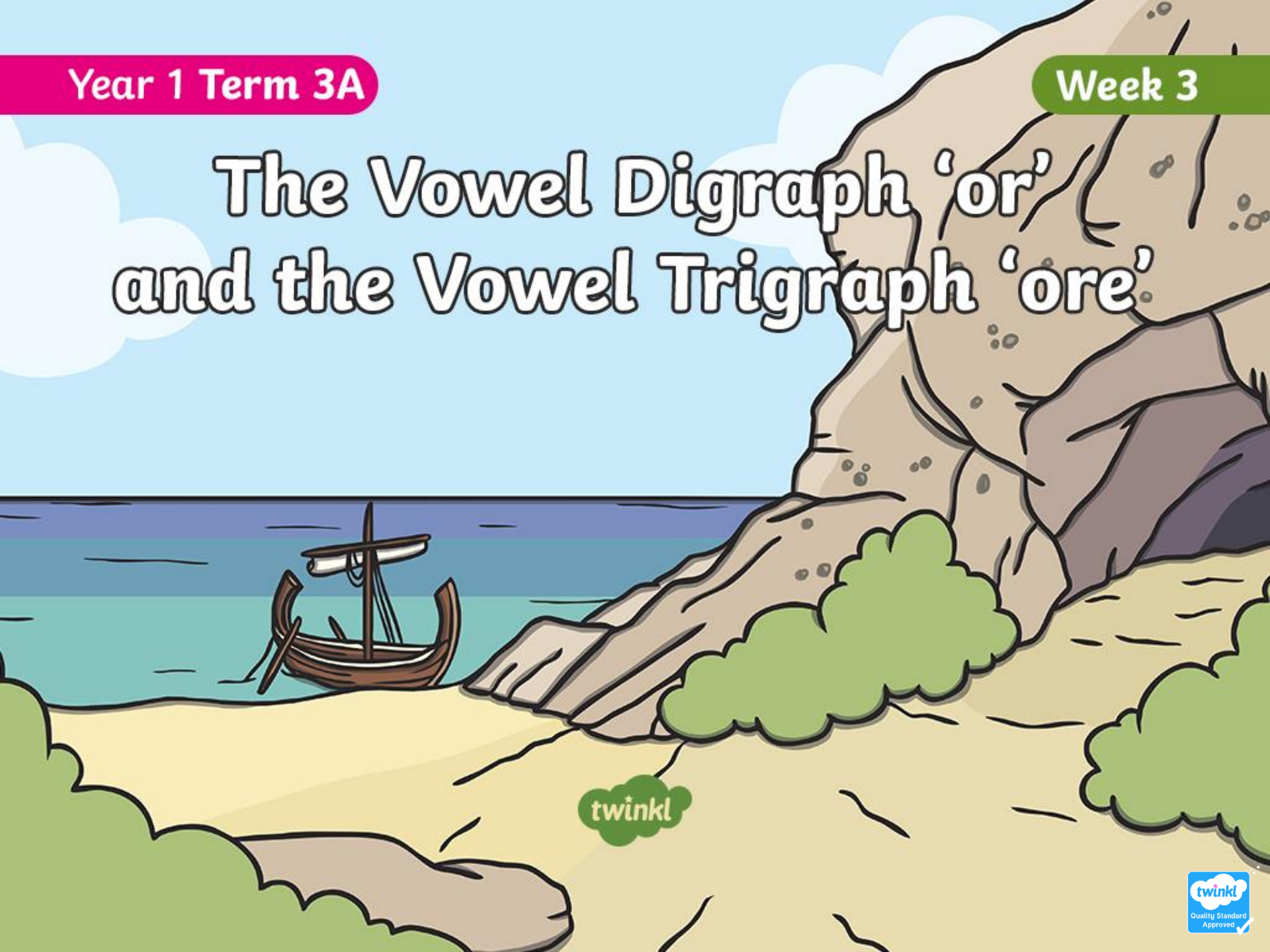


# The Vowel Digraph 'or' and the Vowel Trigraph 'ore'



# The Vowel Digraph 'or'

The sound /or/ can be spelt with the vowel digraph '**or**' in the **beginning**, **middle** or the **end** of word.

The sound /or/ is spelt with the vowel digraph '**or**' in these words...



for



short



born



horse



morning

# The Vowel Trigraph 'ore'

A trigraph is **three** letters that go together to make one sound. The sound /or/ is **usually** spelt with the vowel trigraph '**ore**' at the **end of words**.

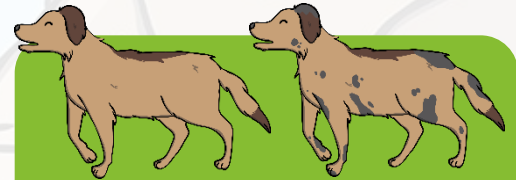
The sound /or/ is spelt the vowel trigraph '**ore**' in these words...



**more**



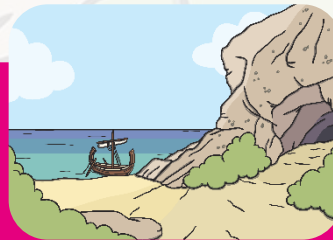
**score**



**before**



**wore**



**shore**



Here are this week's spellings to practise.

for

more

short

score

born

before

horse

wore

morning

shore





twinkl